

Essential First Steps

In order to use LodeStar, you will need to configure Adobe Flash Player Security.

This procedure seems tricky at first, but it is relatively easy. Only you as the author need to do this. Your students do not.

If you don't feel confident, show this document to your technical support person. He/she will help you. This only needs to be done once.

The reason for this configuration is that when you preview a LodeStar activity it may need to communicate to the network. But the activity, before you export, sits on your hard drive. In the Adobe security model, this means local. Local-to-Network communication requires explicit permission from the author.

Your students on the other hand access the activity from the Network. Network to Network communication does not require permission for the Adobe Player to work.

If you are on a PC, read on. If you are on a Mac, jump to the Mac instructions.

You may have the latest Flash Player or you may have an older one. Try the instructions for the latest player first. If the instructions don't match what you are seeing, then try the older

instructions. If that doesn't work, follow the instructions for the Macintosh.

Generally the newer instructions should work with Flash Player 10.3 or later.

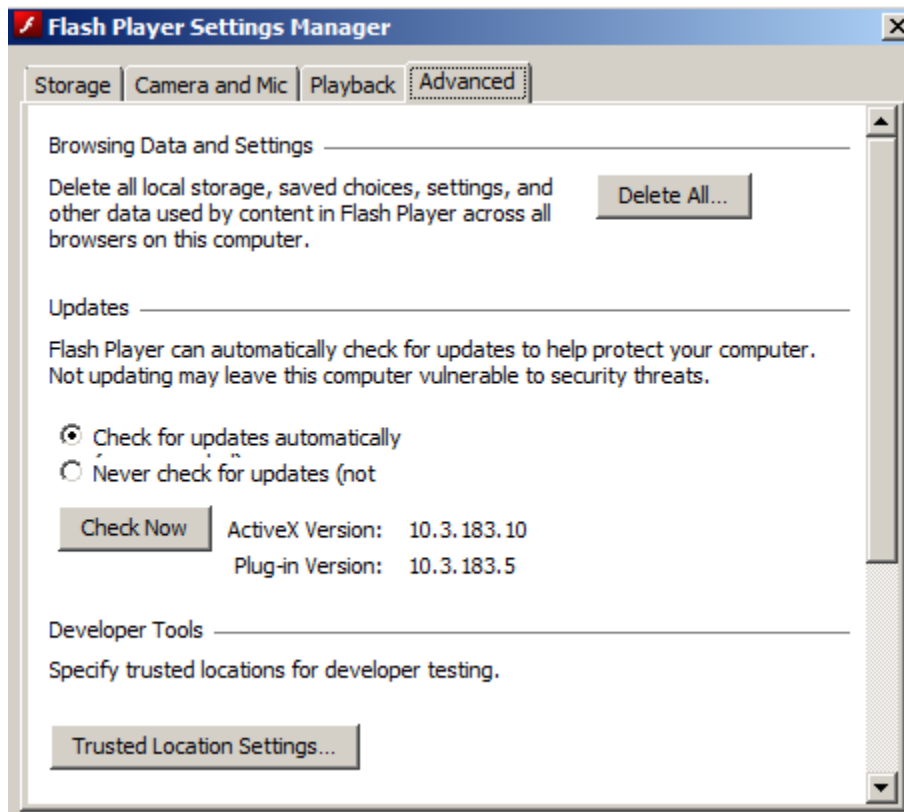
Windows Instructions for Player 10.3 or later

1. Preview a Flash-based LodeStar activity
2. Right click on the Flash activity
3. Select Global Settings

You should see the Flash Player Setting Manager

4. Select the Advanced Tab.

You should see the following:

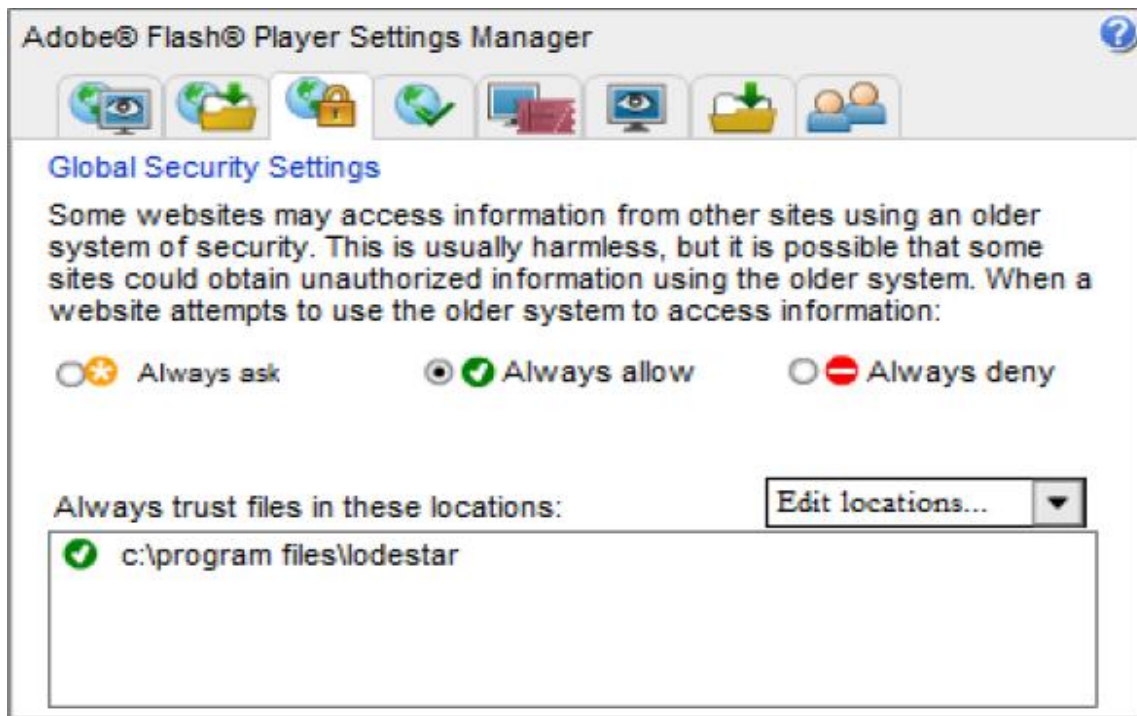


5. Select the Trusted Location Settings
6. Click the Add button
7. Click Add Folder.
8. Browse to the location of the LodeStar Folder. This is generally c:\\Program Files\\Lodestar
9. Click OK. You should now see the full location of the folder in the field labeled Website Domain.
10. Click Confirm.
11. Click Close.
12. Completely exit the browser.
13. Preview the LodeStar activity again.

You may see an ActiveX warning, but you should not see the following message:

Adobe has stopped a potentially unsafe operation.

Configure Adobe Flash® Player Security



As an author you will be locally previewing learning objects that use network resources. To avoid security issues you must configure your Flash® player security. **YOUR STUDENTS WILL NOT NEED TO DO THIS.**

1. After you build your first LodeStar object, select Preview.

2. Right-click on the previewed object.
3. Select **Global Settings** from the Flash Player menu.
4. In the left column, look for **Global Security Settings Panel** and select this hyperlink.
5. In the Global Security Settings Panel, click on **Edit locations**.
6. Select **Add Location**.
7. In the Trust this location field, type: c:\Program Files\Lodestar or, if you installed LodeStar in a different directory, type in the path to that directory.
8. Click on the **Confirm** button.
9. Select the '**Always Allow**' radio button.
10. Confirm that your Settings Manager looks like the above screenshot.
11. Close the browser window.

If None of the Above works or if you are on a Macintosh, follow the instructions for the Macintosh

Macintosh Instructions for any player

Click on the following link and then follow the instructions.

http://www.macromedia.com/support/documentation/en/flashplayer/help/settings_manager.html

1. In the Global Security Settings Panel, click on **Edit locations**.
2. Select **Add Location**.
3. In the Trust this location field, type: c:\Program Files\Lodestar or, if you installed LodeStar in a different directory, type in the path to that directory.

4. Click on the **Confirm** button.
5. Select the '**Always Allow**' radio button.
6. Confirm that your Settings Manager looks like the above screenshot.
7. Close the browser window.